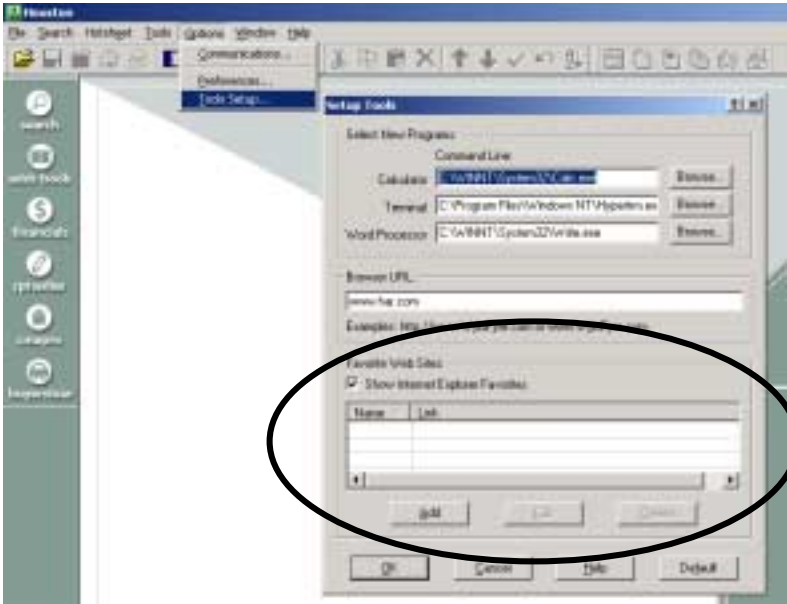


WyldFyre™ Favorite Websites Help

Favorite Websites

To enter your favorite websites, click *Options*, then *Tools Setup*.

- In the Favorite Web Sites section, click *Add* to enter the name of the site and the URL.
- Check the box next to Show Internet Explorer Favorites if you would like these to be easily accessible also.



To access the Website from within WyldFyre,

- Click *Tools* and then *Web Site Favorites*.
- The Web Sites you entered will appear at the top of the list. Your Internet Explorer Favorites are displayed under the menu separator.

